

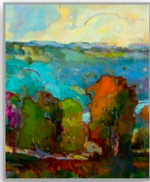
**"Journeys" by Robert Glisson**  
 April 3- May 15, 2021

Prices available upon request. All paintings include contemporary float frames.

Images with frames available upon request.

201-744-6713 novadogallery@gmail.com

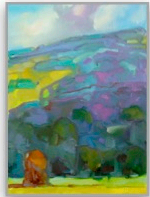
NOVADO GALLERY, 110 Morgan Street, Jersey City, NJ 07302



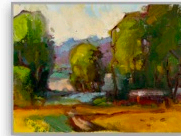
1. **"Autumn Interlude "**, 2020  
 24" x 20"  
 oil on canvas



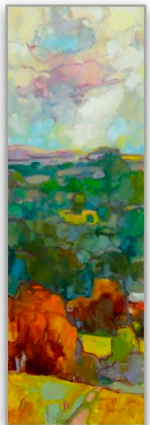
7. **"Ebb and Flow"**, 2020  
 11" x 14"  
 oil on canvas board



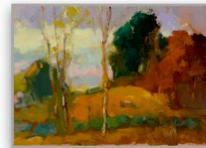
2. **"Ascending scale"**, 2021  
 14" x 10"  
 oil on canvas board



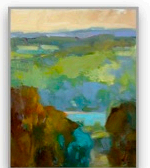
8. **"Midsummer"**, 2020  
 9" x 12"  
 oil on canvas board



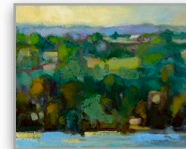
3. **"Near and Far"**, 2021  
 36" x 12"  
 oil on canvas



9. **"Evening Light"**, 2021  
 10" x 14"  
 oil on canvas board



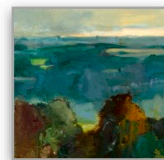
4. **"Response to Seneca Lake"**, 2020\*  
 10" x 8"  
 oil on canvas board



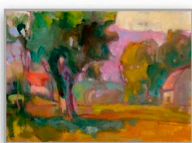
10. **"Hillside View"**, 2020 \*  
 8" x 10"  
 oil on canvas board



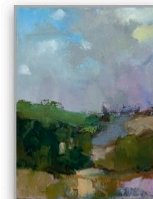
5. **"Ode to Silence"**, 2020 \*  
 12" x 9"  
 oil on canvas board



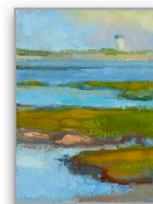
11. **"Last Light of Day"**, 2019  
 10" x 10"  
 oil on canvas



6. **"Recollections"**, 2021  
 10" x 14"  
 oil on canvas board

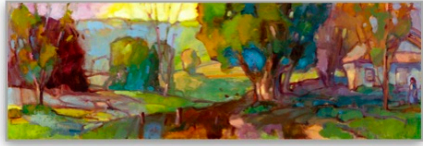


12. **"Into the Fold"**, 2020  
 12" x 9"  
 oil on canvas

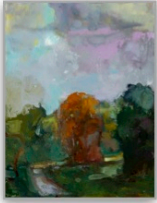


13. **"Cape Light"** 2019 \*  
 12" x 9"  
 oil on canvas board

\* indicates paintings were "completed en plein air"



14. "Evocations", 2021  
12" x 36"  
oil on canvas



15. "Changing Light", 2020  
14" x 11"  
oil on canvas



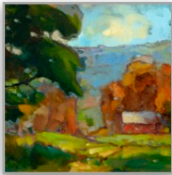
16. "Autumn Colors", 2020  
12" x 9"  
oil on canvas board



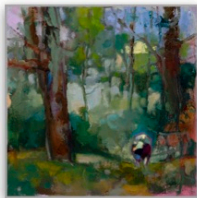
17. "Thinking of Innes", 2021  
18" x 24"  
oil on canvas



18. "An October Walk", 2020  
8" x 10"  
oil on canvas board



19. "A Quiet Spot", 2020  
12" x 12"  
oil on canvas board



20. "The Journey", 2020  
14" x 14"  
oil on canvas

"As a landscape painter, I am continuously trying to express a feeling or mood in nature; to get as close as I can to the "possession" of this beauty. I am not so concerned with a literal depiction of a scene but rather capturing an emotional response. My use of color is sometimes exaggerated in order to elicit emotion. Design decisions are made about what to leave in and what to take out of the picture. In the end, I want the viewer to look at my paintings and take a little journey through them... and a little pleasure."

"While working on my paintings I like to really push the spatial boundaries to invite the viewer to travel around inside my work."

-Robert Glisson